



GREAT SOUTHERN
Land



Benson 64 - Tract # 29-029
ELMORE COUNTY, ALABAMA
64+/- ACRES OFFERED AT \$225,000
Grier Road

This tract is located on Grier Road just south of Bradley Road. If you are looking for a smaller hunting tract or a place to build your home and have land left over to hunt this could be the property that you have been looking for. The property has a nice mix of hardwood and pine and John Bear Creek cuts across the NW corner of the tract. Power and water are available. This land is in a nice, quiet, part of Elmore County.



For a tour or more information call:

Eric Leisy, Listing Agent
334-567-0924 ext. 201
334-657-6707 cell
Eric@GreatSouthernLand.com

Please call Eric Leisy, at 334-657-6707, to schedule a time to look at this property. Call today!

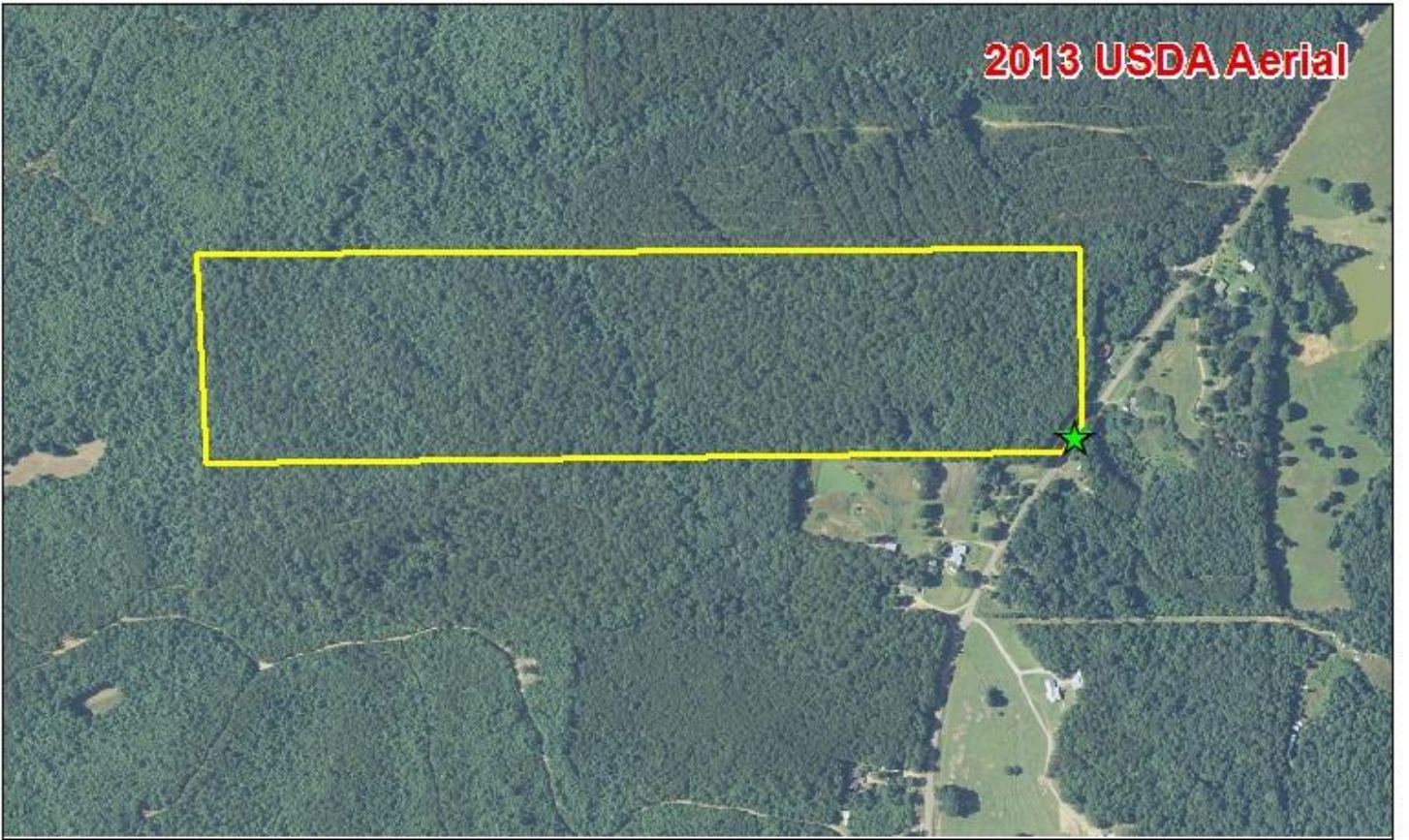
Great
Southern
Land

Fletcher Majors, ALC, Broker
334-567-0924 ext. 205
334-328-9278 cell
Fletcher@GreatSouthernLand.com

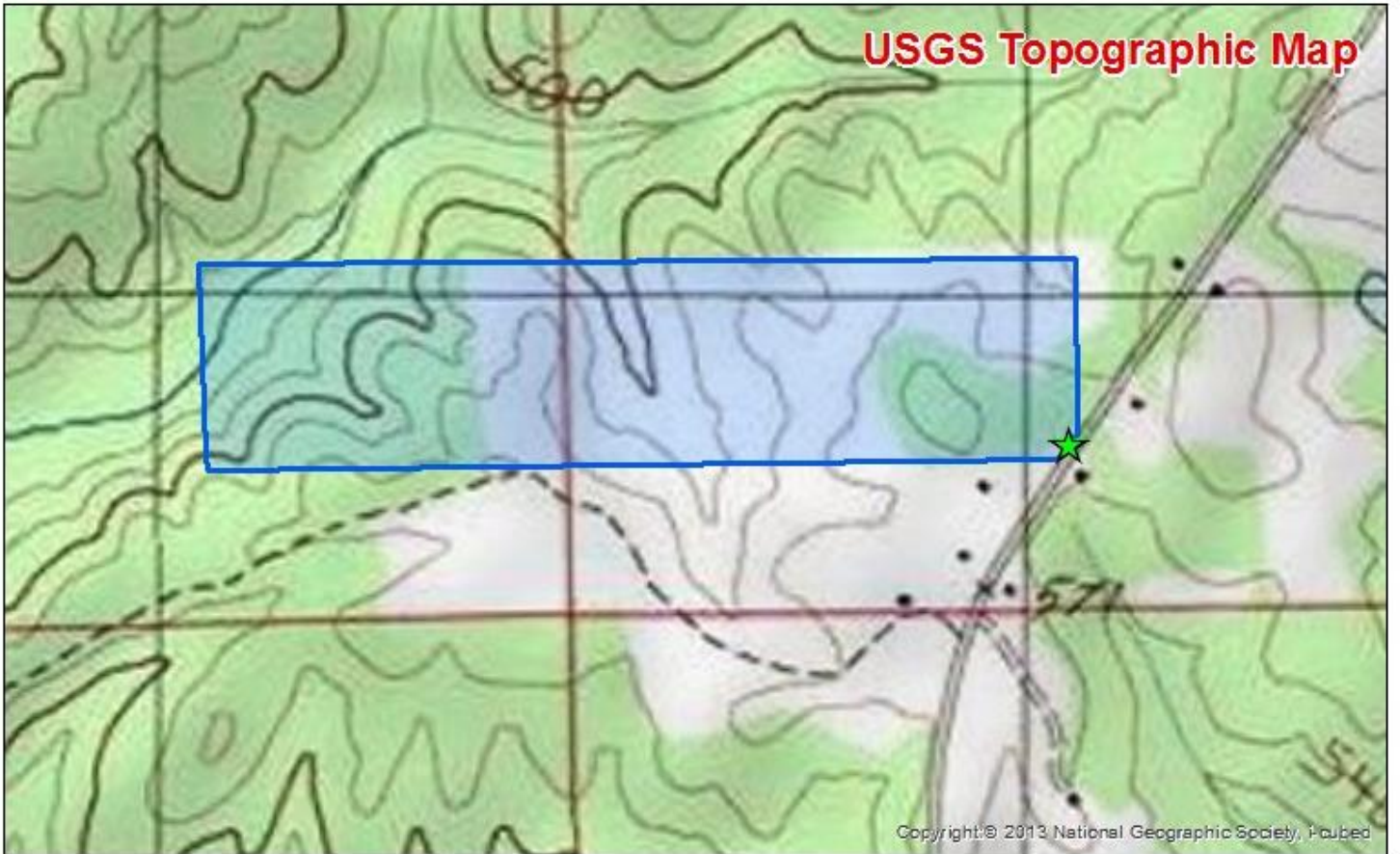
www.GreatSouthernLand.com



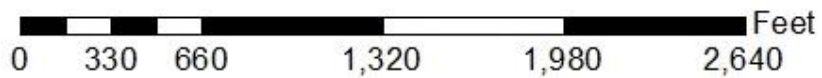
2013 USDA Aerial

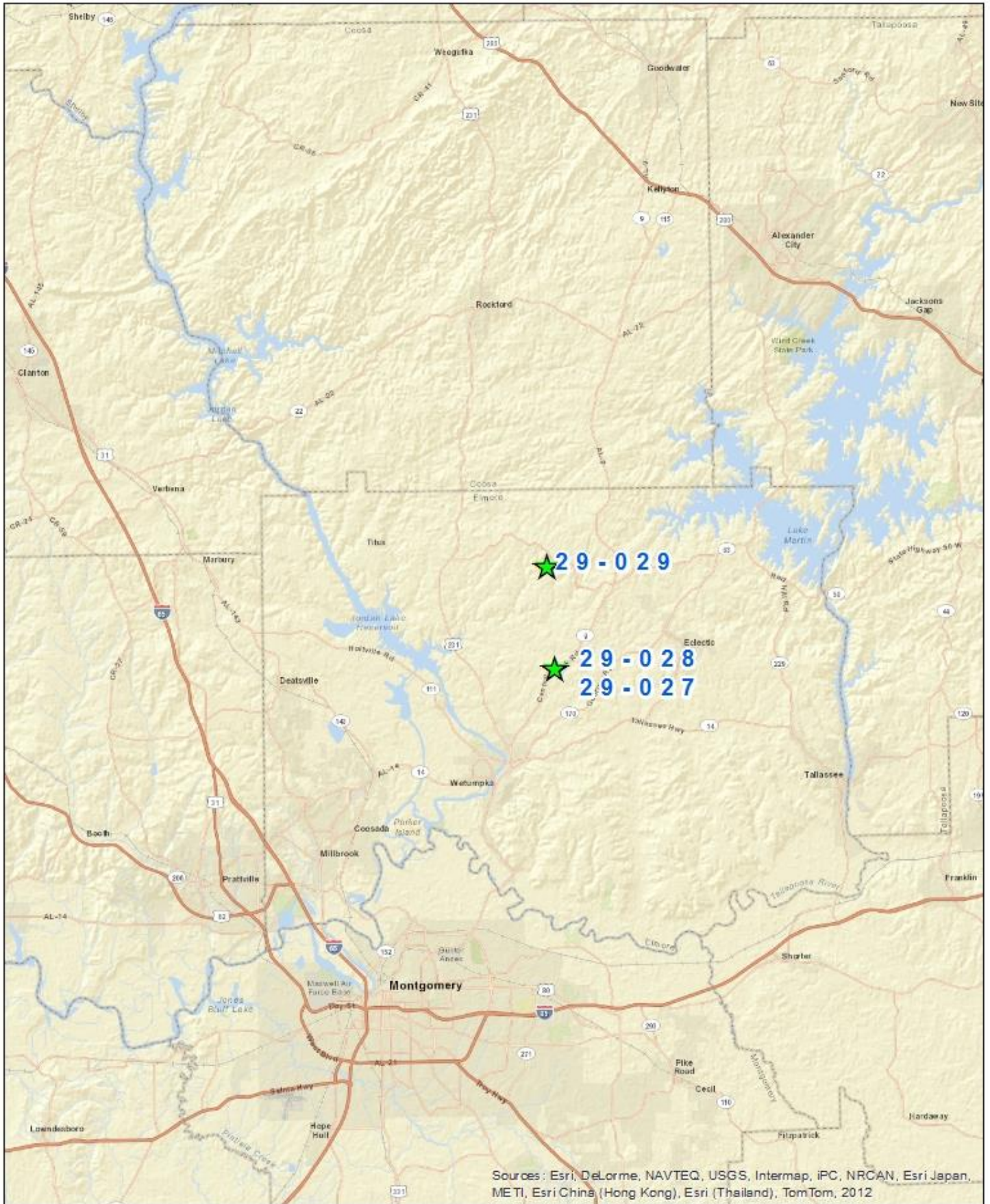


USGS Topographic Map



29-029 Benson 64





Sources: Esri, DeLorme, NAVTEQ, USGS, Intermap, iPC, NRCAN, Esri Japan, METI, Esri China (Hong Kong), Esri (Thailand), TomTom, 2012

29-027 Benson 253 - 29-028 Benson 20 - 29-029 Benson 64

